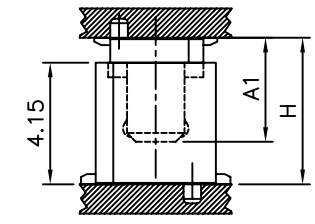
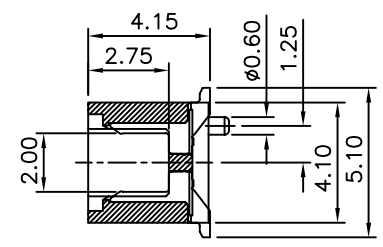
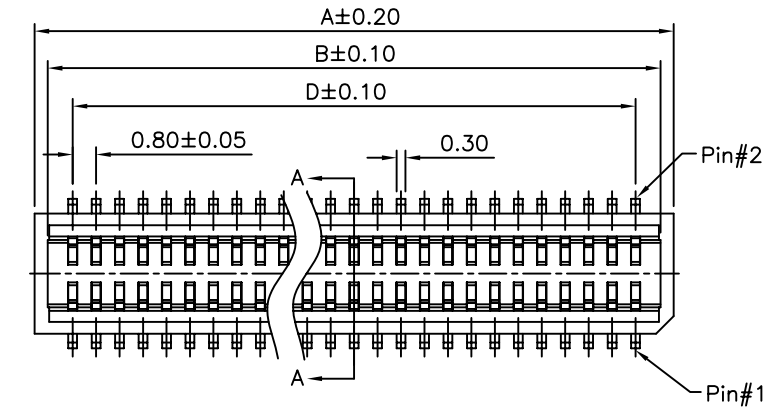
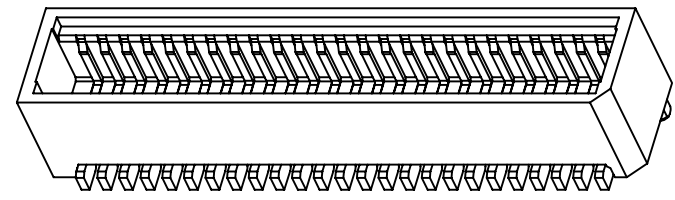
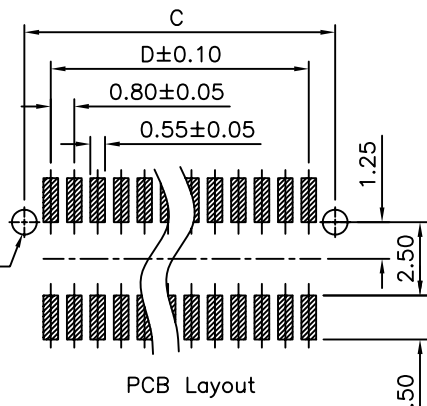
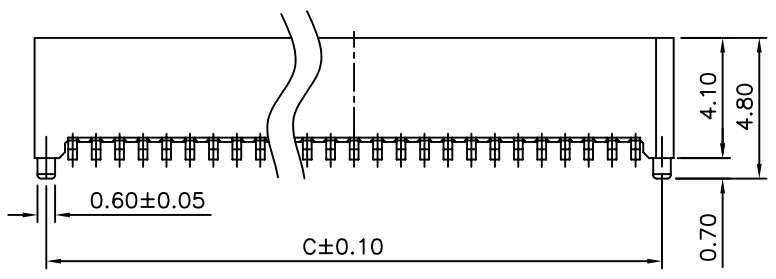


SPECIFICATIONS
 Current Rating:0.5 Amp Max.
 Insulation Resistance:100 Megohms Min. At 250V DC
 Dielectric Withstanding Voltage:500V(r.m.s) AC
 At 0.5mA For 1 Minute
 Contact Resistance:20 Milliohms Max.
 Temperature Range:-40°C To 105°C
 Housing:Hi-Temp. Plastic (UL 94V-0)
 Contact:Copper Alloy,Gold Plated



Mating Draw (Ref)



Part No.	Part No.	Dim. A1	Dim. H
1633	1636	3.55	5.00
1633	1649	4.05	5.50

Pos.	A	B	C	D	Pos.	A	B	C	D
10	5.80	4.90	5.00	3.20	34	15.40	14.50	14.60	12.80
12	6.60	5.70	5.80	4.00	36	16.20	15.30	15.40	13.60
14	7.40	6.50	6.60	4.80	38	17.00	16.10	16.20	14.40
16	8.20	7.30	7.40	5.60	40	17.80	16.90	17.00	15.20
18	9.00	8.10	8.20	6.40	50	21.80	20.90	21.00	19.20
20	9.80	8.90	9.00	7.20	60	25.80	24.90	25.00	23.20
22	10.60	9.70	9.80	8.00	68	29.00	28.10	28.20	26.40
24	11.40	10.50	10.60	8.80	70	29.80	28.90	29.00	27.20
26	12.20	11.30	11.40	9.60	80	33.80	32.90	33.00	31.20
28	13.00	12.10	12.20	10.40	90	37.80	36.90	37.00	35.20
30	13.80	12.90	13.00	11.20	100	41.80	40.90	41.00	39.20
32	14.60	13.70	13.80	12.00					

4UCON 元化興業股份有限公司
 4UCON TECHNOLOGY INC.

DRAWING No.		APPROVED BY		UNLESS OTHERWISE SPECIFIED TOLERANCES ARE .X ±0.20 .XX ±0.15 ANG.
14635		MEI		
		BECKY		
		DRAWING BY		UNIT mm
		HZF		
SCALE	NONE	REV.	A0	

NO.	REV.	REVISIONS	CHK	DATE
			BECKY	02/17/2005