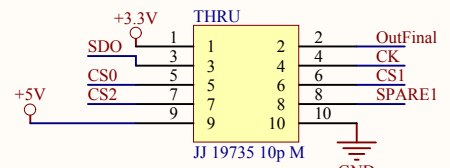
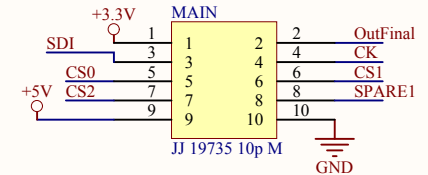
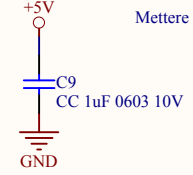
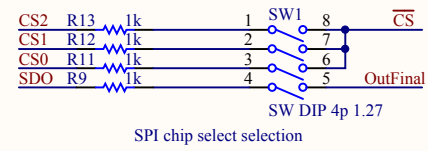
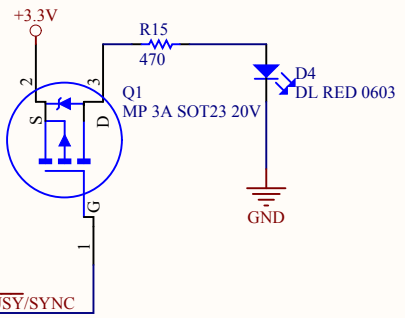
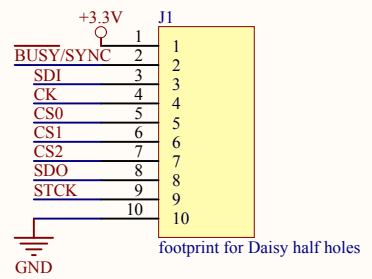
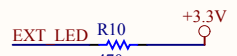


To close the SPI chain SDI-SDO



Mettere PAD su SPARE1



Fid
Fid 1
Fid
Fid 2

Title Daisy 2 V2			ACME Systems srl
Size: A4	Number:	Revision: 2.0	
Date: 06/11/2013	Time: 08:35:00	Sheet 1 of 1	www.acmesystems.it
File: F:\ACME Projects\Altium\altium-common\Daisy 2 V2\Daisy 2 V2.SchDoc			

